
BellSouth Business Markets

675 West Peachtree Street
Atlanta, Georgia 30375

**Carrier Notification
SN91086255**

Date: October 27, 2006

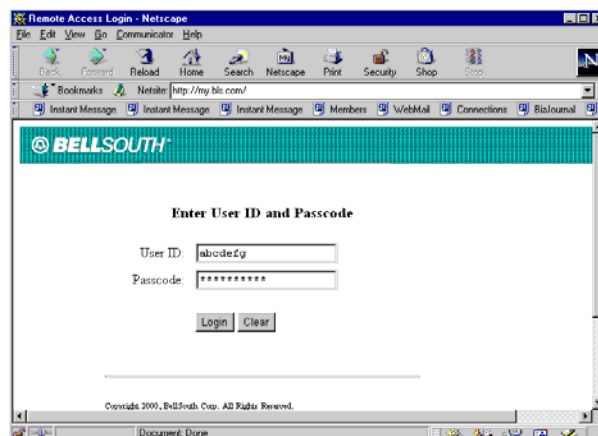
To: Competitive Local Exchange Carriers (CLEC)

Subject: CLECs – (OSS) – Enhancements to the ENCORE Modem Pool for Access to Trouble Analysis Facilitation Interface

This is to advise that, on Thursday, November 30, 2006 at 12:01 AM EST, BellSouth will be upgrading the ENCORE Modem Pool used by some CLECs to access the Trouble Analysis Facilitation Interface (TAFI). The only impact this upgrade will have on the CLEC user will be the methodology used for authentication.

The new process is outlined below:

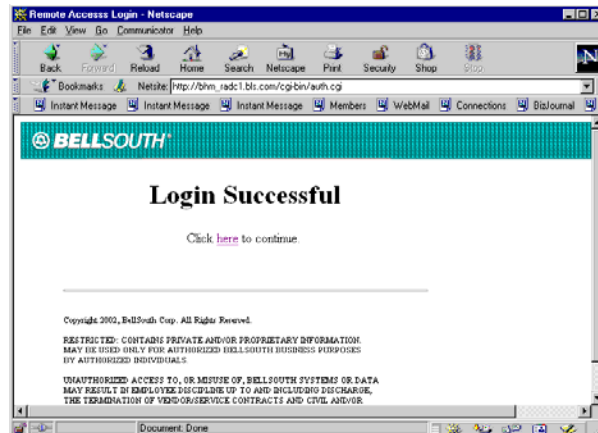
1. The user will employ its existing method to dial the ENCORE Modem Pool (e.g., the dial-up networking feature of Microsoft Windows)
2. Once the modem answers, the user will open its Internet browser and connect to <http://encore.bls.com> to obtain the following login screen: **(The link to this Web site will not be available until November 30, 2006.)**



(Note: BellSouth recommends that this address be retained as a "Bookmark" or "Favorite" for easy access)

3. The user will enter its User_ID and Passcode and then click on the Login button

4. The system then returns the following screen:



5. At this point, the user will close the Internet browser (authentication is complete) and continue with its existing procedure to access TAFI (e.g., open their VT220 terminal emulator and Telnet to the appropriate IP address).

Please contact your account team representative if you have any questions regarding this transition.

Sincerely,

ORIGINAL SIGNED BY JIM TAMPLIN FOR KRISTEN E. SHORE

Kristen E. Shore – Director
BellSouth Business Markets